

Greetings!

We are very excited to be hosting the Region 27 3A-5A marching contest in Waller again this year and look forward to seeing each of your groups perform.

Our goal is that on the day of contest, your complete focus can be placed on your students and their performance. In order to better facilitate this, please take a moment to familiarize yourself with the flow of the contest on the attached pages.

Directions

Traveling on 290 from the East, take the exit for FM 2920. Go through the light at 2920 and take an immediate right on Stokes Road.

Traveling on 290 from the West, take the exit for FM 2920. Make a U-Turn onto the west bound service road, then turn right on Stokes Road.

Arrival

Upon arrival, all spectators, buses, and trucks should utilize the designated entrance off Stokes Road (if traveling north from 290, this will be the first gate into the stadium that you come to, see map). The entrances from Waller-Spring Creek will remain closed so that bands traveling to and from warm-up do not have to contend with traffic. Spectator parking will be on the home side of the stadium, bus and truck parking will be in the visitor parking lot.

Event staff and volunteers will be available in the parking lots and all warm-up areas to assist you in any way you need and will help you to stay on schedule throughout your warm-up and preshow time.

Admission

Admission for spectators will be \$5 CASH ONLY paid at the gate. Children 12 and under are free. Waller ISD Stadium does have a clear bag policy for spectators. Please be sure to share the attached policy with your parents or anyone else who may attend as a spectator.

Contest Office

The contest office will be on the 3rd floor of the press box. Entry to this area is by way of the elevator located in the center of the home concourse.

Warm-Up

The warm-up areas will be located on our band practice lot. Each area will be approximately 41 x 65 yards. There will be designated overflow spaces on the grass field directly across from this lot if you'd like more space.

Warm-Up (cont.)

There will also be designated front ensemble warm-up areas in the bus/truck parking lot. In order to minimize the potential for sound to bleed over into the stadium, we ask that no metals or amplification be used during the warm-up time. This is to avoid having to move equipment the entire distance to the band warm-up areas. Battery percussion will need to use the band warm-up areas, so if you would like your front ensemble to warm-up with the battery and/or winds, you will need to push the equipment to the regular warm-up zone. The path is flat and smooth, but not short. We appreciate your cooperation.

Water

There will be water stations available as students travel from warm-up to the stadium, and as they exit the field after performing.

Restrooms

Restrooms for student use will be available on the visitor side of the stadium. The visitor seating area will be closed. Please assist us in making sure your students do not enter the visitor stands or create excess noise while utilizing the facilities on this side of the stadium.

Student Seating

Please utilize the outside sections of the home stands for your students to view the other bands. The home side of the stadium should provide an adequate amount of seating for all band students and spectators.

Food

There will be limited concessions available for the duration of the contest. No outside food or drinks (except water) are allowed to be brought onto the property. If you need to feed your entire band, we can arrange full, catered meals. Please contact me to make arrangements if this is something you will need.

Please review the attached maps, and feel free to contact me if you have any questions or concerns.

Sincerely,

Grant McWilliams
Director of Bands, Waller ISD
281-808-3495
mmcwilliams@wallerisd.net

UIL Information from Region 27

Required Forms: <https://uilmusicregion27.com/events/marching/>

The Statement of Compliance, Announcers Script and signed FORM 1 should be emailed to uilmusicregion27@gmail.com at least 24 hours prior to the contest. There is no reason to come to the contest office prior to your performance. Don't forget to bring your check with you to the contest office after you perform.

Marching Band Rules and FAQ's:

[Marching Band — Music — University Interscholastic League \(UIL\) \(uiltexas.org\)](http://uiltexas.org)

Warm-up: Bands will have 45 minutes to warm-up; front ensembles will have 40 minutes to warm-up. You may not begin playing or stretching/marching warm-up early. (This includes auxiliary groups.) The schedule of performance times indicates warm-up **Area A, B or C**.

- No wireless voice amplification systems or wireless metronomes may be used in the warm-up areas. Bluetooth devices may be used. Time-keeping devices such as metronomes or jam blocks, megaphones or similar voice amplification devices may be used in warm-up areas, but *must* be used with wire-connected microphones, and *must* remain at a reasonable volume depending on the acoustics of the warm-up area and proximity to other bands/warm-up areas, judging areas, and the Performance Field.
- **REMINDER:** The UIL marching band rules advisory committee passed a proposal allowing bands at a contest to check wireless devices only during contest intermissions and during the 7- minute period that includes a band's 2-minute field exit and a band's 5- minute field entrance. This includes bands in warm-up and other areas around the stadium.
- You may only warm-up during your specified warm-up time. PLEASE FACE AWAY FROM THE STADIUM WHILE USING OUTSIDE WARM-UP AREAS. Percussion needs to keep the building between themselves and the stadium.
- All bands must leave the warm-up area at the designated time. The travel time to the stadium will be 15 minutes. A contest official will be on hand to inform you of your time restrictions. The official contest time will be Cell Phone time.
- Front Ensembles should leave warm-up 5 minutes earlier than the band due to the travel distance.

Ready Position:

- **Bands/guard/props** will enter at the **VISITOR** field gate at the fieldhouse end of the stadium. Once the previous band's performance ends, your groups will be moved into the stadium. Bands/guard/props will move into the stadium up to the goal line (zero line) to pre-stage. You may move onto the field after your group is announced. A Waller ISD director will be there to direct your groups into place.
- The **Front Ensemble** will enter at the **HOME** field gate and stage along the front curb, no closer than the end zone. Front Ensembles will be allowed to move to ready position (20 yd line) after the previous band's performance. Front Ensembles may not be staged in the scoreboard area. Front Ensembles may move onto the field when your group is announced. A Waller ISD director will be there to direct your groups into place.

Five minutes before your scheduled performance time, the announcer will say: “_____ High School, you may take the field.” From that point, you will have 5 minutes to set up your band on the field and start your show. Activities may include warm-up and/or cadence.

Electrical Power is located at the 50 yard line on the home side.

UIL Marching band script and timing rules may be found below:

https://www.uiltexas.org/files/music/UIL_MARCHING_BAND_SCRIPT_Fillable.pdf

NOTE TO DIRECTORS: The 5 minute and 8 minute clock will be programmed on the scoreboard and also kept on a stopwatch in the press box. Warm-up or pre-show is permitted during the 5-minute set-up time; however, judges will be instructed to not begin their evaluation until the 8-minute clock shows 7:59. If you do not wish to utilize the entire 5-minutes of set-up you may hold your band at the field entrance to coordinate your ready time with the beginning of the announcement.

With 20 seconds remaining on the 5-minute clock the announcer will read the statement in the script which begins with “Drum Majors.” At this point, the scoreboard clock will be stopped and reset. The remaining 20 seconds will be kept on a stopwatch in the press box. At the conclusion of the final 20 seconds, the 8-minute stadium clock will begin.

Performer and Equipment Exit:

- All props, winds, and battery equipment and personnel will exit toward the score board and then through the gate by the visitor bleacher. Front ensembles will push forward and then exit the same gate they entered while traveling in front of the next group so as not to impede their ability to enter the field. At the conclusion of each band’s performance the postscript will be read while the band will have two minutes to exit the field and clear the marching surface of all equipment, instruments and props. The use of either instrumental or verbal cadence is optional. A band that fails to be clear of the field (outside the sidelines or endlines) or continues to use instrumental or verbal cadence at the end of the two minutes will be disqualified.

UIL Marching Band Regulations

Section 1105: REGION MARCHING BAND CONTEST

<https://www.uiltexas.org/policy/constitution/music/region-marching-band>

- Please remind parents of the **“no balloons”** UIL policy!

Use of Electronics with Marching Band (From the UIL Office)

https://www.uiltexas.org/files/music/Marching_Band_Electronics_FAQ.pdf

- If you have any questions about electronics, please email music@uiltexas.org and copy uilmusicregion27@gmail.com

PROPS, PODIUMS, & FRONT ENSEMBLES may be staged outside of the stadium in the field house area 30 minutes prior to your performance time, if the items are not going to WARM-UP. This is a staging area only, you may not warm-up in this area.

Q & A from UIL on props:

https://www.uiltexas.org/files/music/Marching_Band_Props.pdf



2023 Region 27 3A-5A Marching Contest

Host: Grant McWilliams **Ticket Prices:** \$5-Cash Only

Wednesday, October 18, 2023

Rain Date: Thursday, October 19, 2023

Waller ISD Stadium, Stokes Road, Waller, TX 77484

School	Classification	Move to Warm-Up	Warm-Up Area	Warm-Up Time	Walk to Stadium	Enter Field	Perform
Hempstead HS	3A	9:10	A	9:25-10:10	10:10	10:25	10:30
Navasota HS	4A	9:25	B	9:40-10:25	10:25	10:40	10:45
Sealy HS	4A	9:40	C	9:55-10:40	10:40	10:55	11:00
Bellville HS	4A	9:55	A	10:10-10:55	10:55	11:10	11:15
Royal HS	4A	10:10	B	10:25-11:10	11:10	11:25	11:30
Brenham HS	5A	10:25	C	10:40-11:25	11:25	11:40	11:45



SAFETY MADE **CLEAR**

APPROVED BAGS

CLEAR
TOTE



CLEAR
BACKPACK



CLEAR
STORAGE BAG



NO SIZE LIMIT



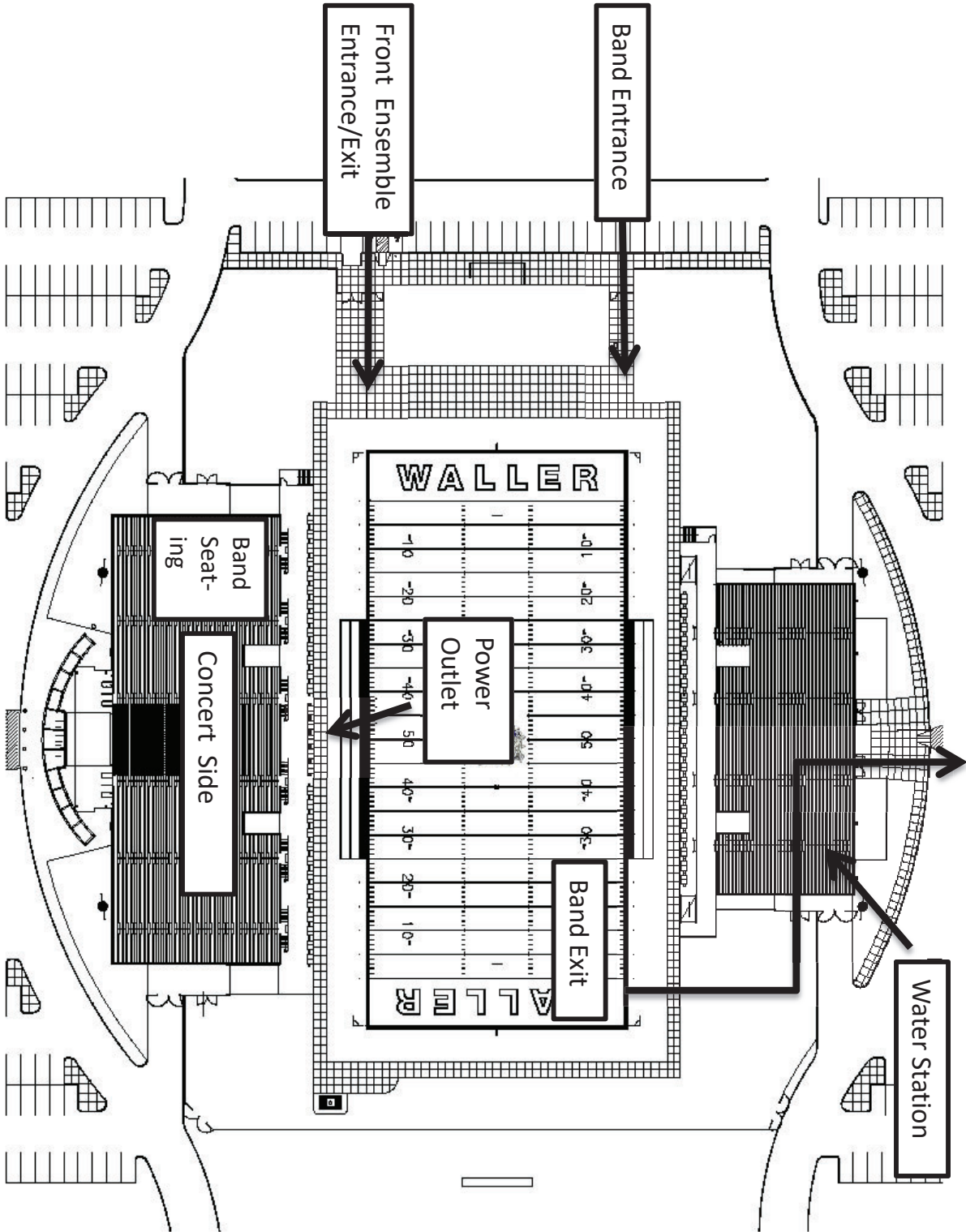
The **ONLY** non-clear bags permitted are those no larger than the size of a hand.

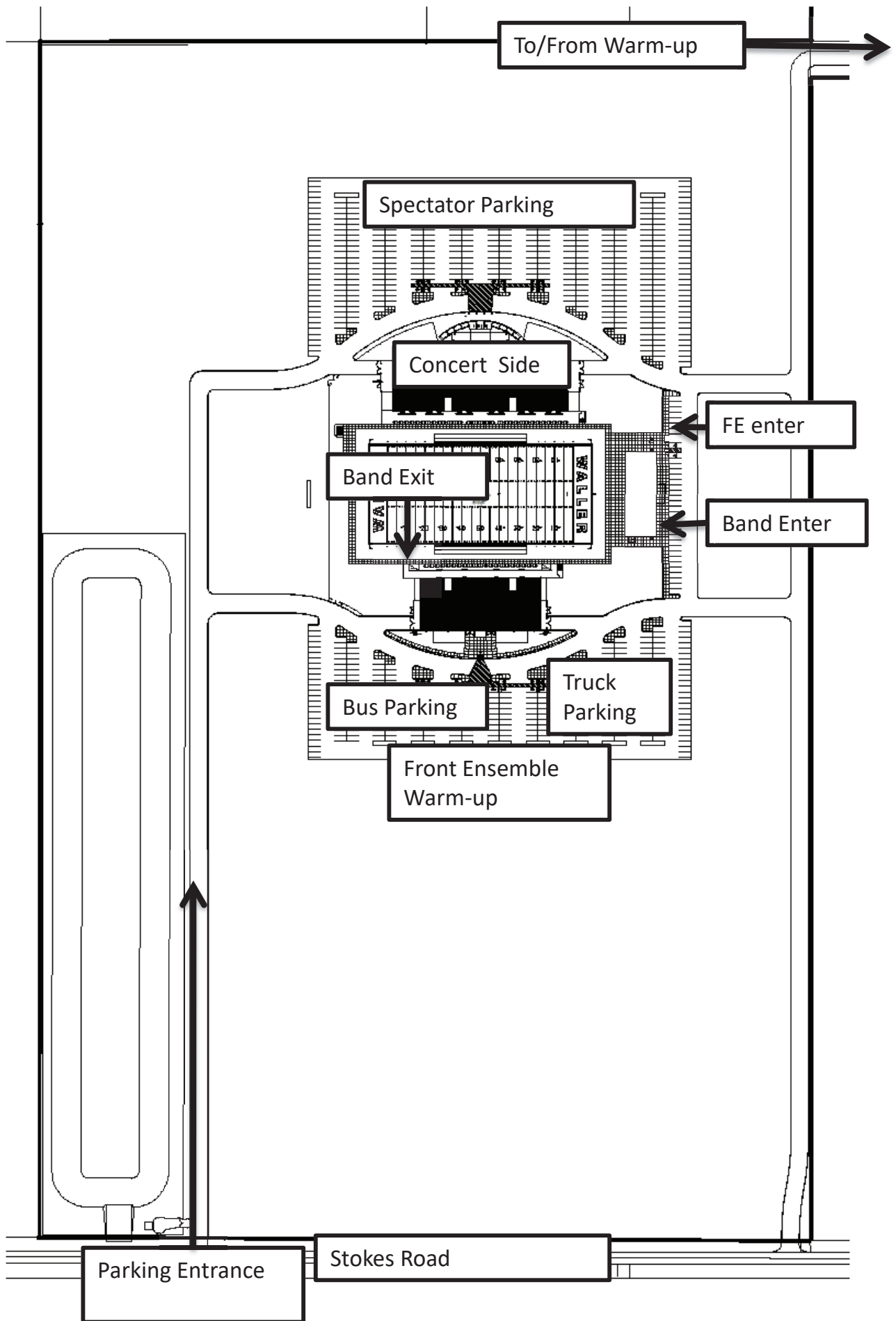
POLICY INFO

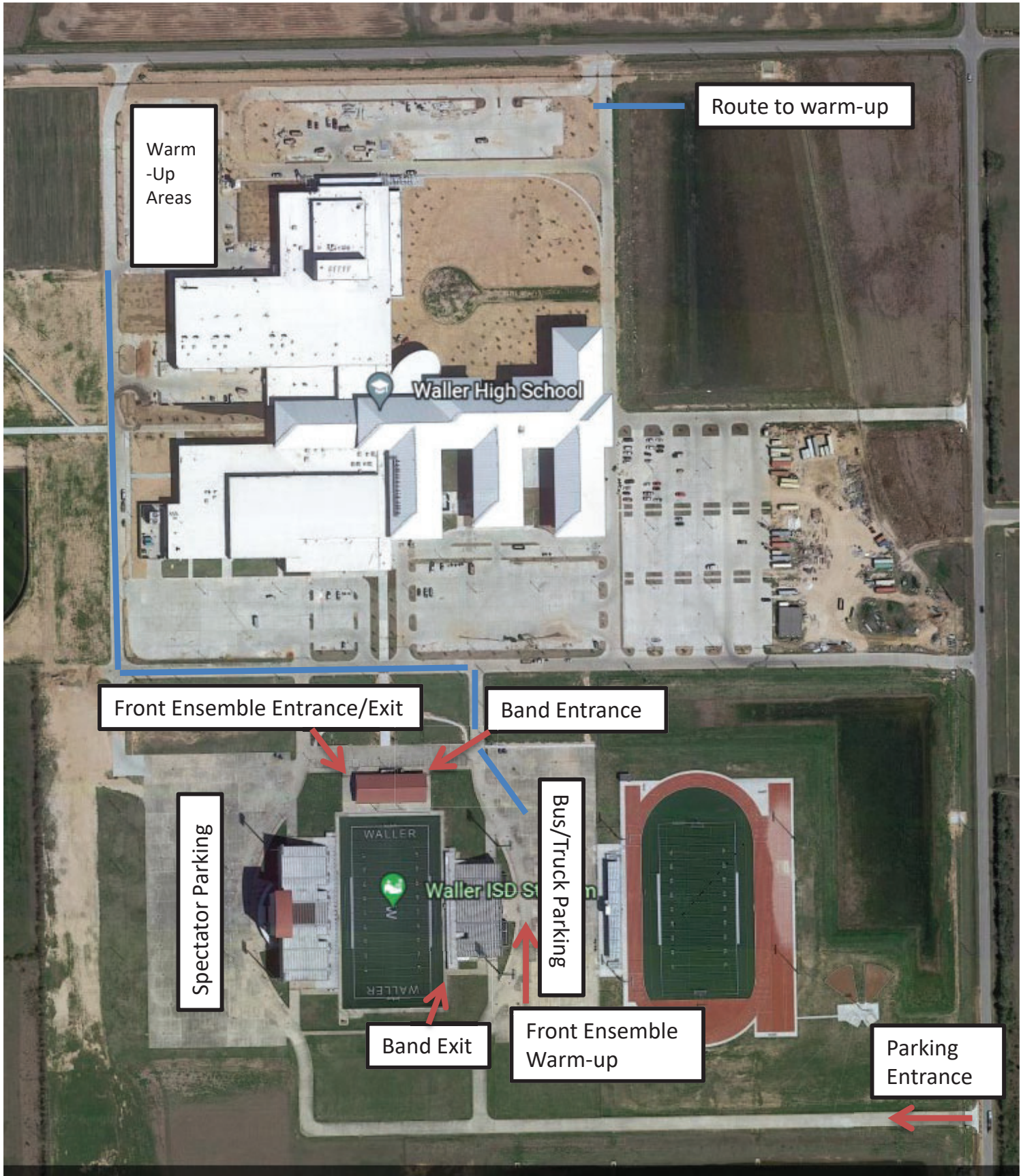
- **ONLY CLEAR BAGS ARE PERMITTED INSIDE THE FACILITY.**
- The transparency of the bag cannot be blocked by any object in or on the bag such as a coat, blanket, or large logo/monogram.

EXCEPTIONS: Credentialed media, medical personnel, and other game officials must enter through the pass gate.

Truck /Bus Parking







Warm
-Up
Areas

Route to warm-up

Waller High School

Front Ensemble Entrance/Exit

Band Entrance

Spectator Parking

Bus/Truck Parking

Waller ISD Stadium

Band Exit

Front Ensemble Warm-up

Parking Entrance